

**TOSHIBA**

# De-palletizer



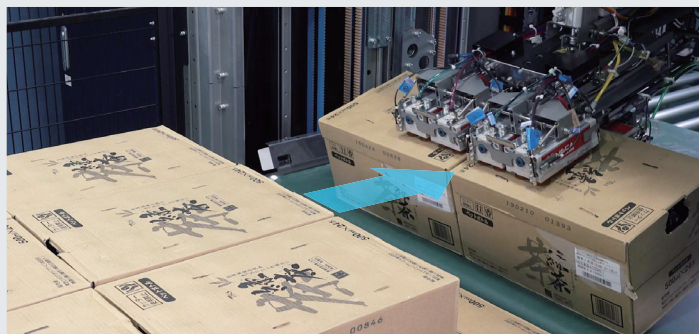
Info available  
online



## Features

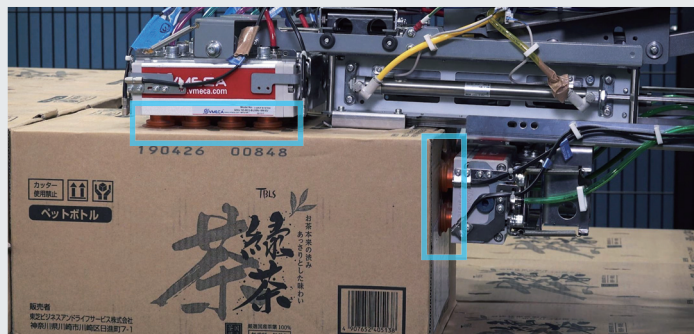
### 600pph high-speed handling of heavy items

- Items are pulled without centrifugal force, which enables quick unloading of heavy items.
- Depending on the stacking pattern, the robot automatically judges the number of items (either 1 or 2 items) which can be unloaded simultaneously for efficient unloading.



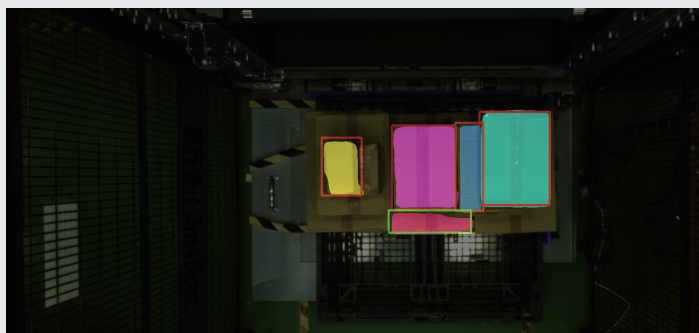
### Careful handling of products

- Two-sided gripper (top and side) reduces stress to the product surface.
- The gripper pulls items instead of lifting, reducing risk of falling and/or breaking.



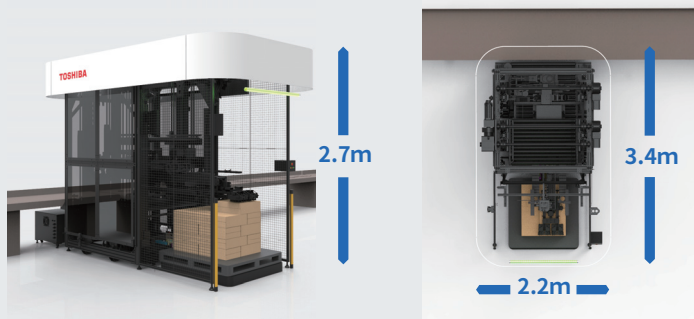
### No prior programming required

- Image recognition technology enables the robot to handle various items in various stacking patterns.
- Short recognition time enables the robot to unload items smoothly.



### Easy expansion

- The robot is space saving, requiring only 2.2 m x 3.4 m for installation.
- Can be used without a safety fence or surrounding buffer area.\*



\*Depending on system configuration or layout, a safety fence or other equipment may be required.

## Specifications

Item	Description
Gripper type	Two-sided gripper (top and side)
Applicable containers	Flat pallets
Max. item size (mm)	600 × 600 × 500
Item weight (kg)	30 or less
Dimensions (mm)	2200 x 3400 x 2700 (excluding protruding part, control panel, and air compressors)
Throughput (pph)	600 (It may take different values depending on the size and stacking condition of items.)
Electricity supply	6k VA, three-phase 200 V (excluding compressors)
Environmental conditions	Ambient temperature: 0 to 40 °C, Relative humidity: 20 to 90%RH (Non condensing)

## Toshiba Infrastructure Systems & Solutions Corporation

Security & Automation Systems Division International Sales & Marketing Department

<https://www.toshiba.co.jp/sis/en/scd/logistics/index.htm>  
72-34, Horikawa-cho, Saiwai-ku Kawasaki 212-8585, Japan Tel: +81-44-331-1686

Info available online



●The information contained herein is as of February 1, 2020. ●The information contained herein is subject to change without notice. ●The information contained herein includes products and systems under planning or development. ●The information contained herein is presented only as a guide for the applications of our products. No responsibility is assumed by TOSHIBA for any infringements of patents or other rights of the third parties which may result from its use. No license is granted by implication or otherwise under any patent or patent rights of TOSHIBA or others. ●TOSHIBA products should not be embedded to the downstream products which are prohibited to be produced and sold, under any law and regulations. ●TOSHIBA does not take any responsibility for incidental damage (including loss of business profit, business interruption, loss of business information, and other pecuniary damage) arising out of the use or disability to use TOSHIBA products. ●The products described in this document may include products subject to the foreign exchange and foreign trade laws. ●The products described in this document may contain components made in the United States and subject to export control of the U.S. authorities. Diversion contrary to the U.S. law is prohibited.