

SASB Reference Table

Topic	Accounting Metric	Category	Unit of Measure	Code	Disclosure	Reference
Energy Management	(1) Total energy consumed (2) Percentage grid electricity (3) Percentage renewable	Quantitative	Gigajoules (GJ), Percentage (%)	RT-EE-130a.1	(1) 21,471,000 GJ (2) 74% (3) 38%*1	<ul style="list-style-type: none"> ▶ Environmental Data ▶ Response to Climate Change at Our Sites
Hazardous Waste Management	Amount of hazardous waste generated, percentage recycled	Quantitative	Metric tons (t), Percentage (%)	RT-EE-150a.1	Total amount of hazardous waste: 4,200 t*2 Percentage recycled: 94%*3 Percentage incinerated: 8.7%*4	<ul style="list-style-type: none"> ▶ Environmental Data ▶ Response to Climate Change at Our Sites
	Number and aggregate quantity of reportable spills, quantity recovered	Quantitative	Number, Kilograms (kg)	RT-EE-150a.2	Number of substances: 25*5 Amount of chemical substances released: 2,170 kg*5 No reportable chemical substances were released into the soil	
Product Safety	Number of recalls issued, total units recalled	Quantitative	Number	RT-EE-250a.1	Number of recalls started from FY 2023: 1 voluntary recall Number of units recalled: 84,496 units across 11 models	▶ Disclosure of Product Safety and Quality Information
	Total amount of monetary losses as a result of legal proceedings associated with product safety	Quantitative	Reporting currency	RT-EE-250a.2	—	
Product Lifecycle Management	Percentage of products by revenue that contain IEC 62474 declarable substances	Quantitative	Percentage (%) by revenue	RT-EE-410a.1	Toshiba Group promotes green procurement as a part of our environmental considerations in the manufacturing processes. Our Green Procurement Guidelines supported management of chemical substances in procured goods by establishing the "Toshiba Group Environment-related Substance List," which includes applicable substances on the IEC62474 Declarable Substance List. Since 1999, we have revised the Green Procurement Guidelines as necessary in order to respond to changing circumstances, such as stricter regulations on chemicals contained in products.	<ul style="list-style-type: none"> ▶ Toshiba Group Green Procurement Guideline ▶ Green Procurement / Green Purchase
	Percentage of eligible products, by revenue, that meet ENERGY STAR® criteria	Quantitative	Percentage (%) by revenue	RT-EE-410a.2	Only a limited number of Toshiba Group products are eligible for ENERGY STAR®. Among them, certain multifunction peripherals (MFPs) manufactured and sold by Toshiba Tec Corporation meet the ENERGY STAR® criteria. However, their revenue accounts for only a small percentage of Toshiba Group's total consolidated sales.	
	Revenue from renewable energy-related and energy efficiency-related products	Quantitative	Reporting currency	RT-EE-410a.3	Toshiba Group provides a wide range of equipment, systems and services that generate, transfer, store and smartly use electricity. We aim to build a society that realizes both a stable electricity supply and harmony with the environment and future generations can live with peace of mind.	
Materials Sourcing	Description of the management of risks associated with the use of critical materials	Discussion and Analysis	n/a	RT-EE-440a.1	Toshiba Group introduced Business Continuity Plan (BCP) Procurement Guidelines in 2012. In the same year, we built a system to manage corporate information on upstream suppliers, in order to minimize the risk of and the time required to resolve supply chain disruptions.	▶ Risk Management Using the Business Continuity Plan (BCP)
Business Ethics	Description of policies and practices for prevention of: (1) corruption and bribery and (2) anti-competitive behavior	Discussion and Analysis	n/a	RT-EE-510a.1	Toshiba Group has engaged in rigorous efforts to prevent violation of antitrust law, bribery, and other corrupt practices. For each, it has established compliance programs reflecting laws and regulations in Japan and overseas as well as associated sets of guidelines. Those guidelines clearly define and prohibit subject acts such as cartels, bribery and facilitation payments. In addition, the compliance programs and guidelines stipulate the internal systems, and provide for pre-screening related to contact with civil servants and a due diligence policy for comprehending risks of bribery regarding with concerned parties. Also, in accordance with provisions of the compliance programs, Toshiba makes sure to provide education, and conduct voluntary audits, etc. To prevent violations and detect situations leading to violations at an early stage, Toshiba Group established the whistleblower system for employees and the Clean Partner Line for suppliers and business partners as a system to report violations or suspected violations, encouraging them to use such systems.	▶ Compliance with the Antimonopoly Act and Anti-corruption
	Total amount of monetary losses as a result of legal proceedings associated with bribery or corruption	Quantitative	Reporting currency	RT-EE-510a.2	0 yen	
	Total amount of monetary losses as a result of legal proceedings associated with anti-competitive behavior regulations	Quantitative	Reporting currency	RT-EE-510a.3	0 yen	

Activity Metric	Category	Unit of Measure	Code	Disclosure	Reference
Number of units produced by product category	Quantitative	Number	RT-EE-000.A	Toshiba Group contributes to a sustainable future through the global delivery of products and services in a wide range of business domains	▶ Toshiba Group Business Domains
Number of employees	Quantitative	Number	RT-EE-000.B	105,331*6	▶ Corporate Data

*1 Renewable energy refers to energy from solar power

*2 The total volume of hazardous waste is the amount of specially controlled industrial waste defined by the Waste Management and Public Cleansing Law in Japan

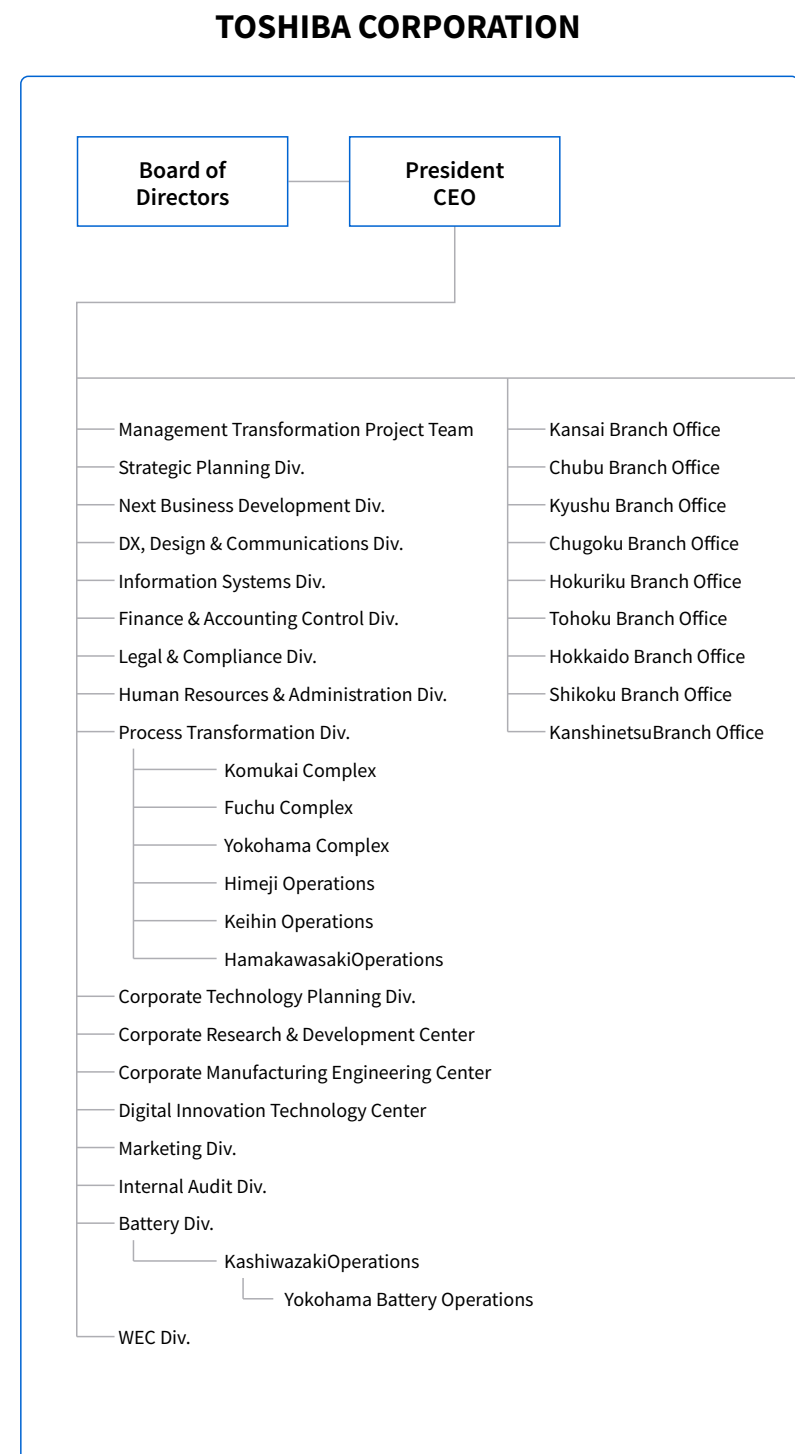
*3 Volume of hazardous waste recycled refers to the amount of specially controlled industrial waste that the company recycled

*4 Volume of hazardous waste incinerated refers to the amount of specially controlled industrial waste that the company used for energy recovery

*5 Reportable amount of chemical substances released is the number and volume of substances managed by Toshiba Group among substances designated as hazardous substances in the Comprehensive Environmental Response, Compensation, and Liability Act (CERCLA) in the U.S.

*6 As of March 31, 2024

Organization Chart (As of January 1, 2025)



- Energy Systems & Solutions**
 - Toshiba Energy Systems & Solutions Corporation
 - Toshiba Plant Systems & Services Corporation
- Infrastructure Systems & Solutions**
 - Toshiba Infrastructure Systems & Solutions Corporation
- Building Solutions**
 - Toshiba Elevator and Building Systems Corporation
 - Toshiba Lighting & Technology Corporation
- Retail & Printing Solutions**
 - Toshiba Tec Corporation
- Electronic Devices & Storage Solutions**
 - Toshiba Electronic Devices & Storage Corporation
 - NuFlareTechnology, Inc.
- Digital Solutions**
 - Toshiba Digital Solutions Corporation

Consolidated Subsidiaries and Affiliated Companies

Consolidated Subsidiaries

(As of March 31, 2024)

- | Domestic | | |
|--|---|---|
| <ul style="list-style-type: none"> • Japan Semiconductor Corporation • Kaga Toshiba Electronics Corporation • Nishishiba Electric Co., Ltd. • Nuclear Fuel Industries, Ltd. • NuFlare Technology, Inc. • Toshiba Data Corporation • Toshiba Electronic Devices & Storage Corporation • Toshiba Digital Solutions Corporation | <ul style="list-style-type: none"> • Toshiba Elevator and Building Systems Corporation • Toshiba Energy Systems & Solutions Corporation • Toshiba Global Commerce Solutions Holdings Corporation • Toshiba Industrial Products and Systems Corporation • Toshiba Infrastructure Systems & Solutions Corporation | <ul style="list-style-type: none"> • Toshiba IT-Services Corporation • Toshiba Lighting & Technology Corporation • Toshiba Materials Co., Ltd. • Toshiba Plant Systems & Services Corporation • Toshiba Tec Corporation • Toshiba Tec Solution Service Corporation • Toshiba Denzai Marketing Co.,Ltd. • Toshiba Trading Inc. |
| Overseas | | |
| <ul style="list-style-type: none"> • Toshiba America Business Solutions, Inc. • Toshiba America Electronic Components, Inc. • Toshiba America, Inc. • Toshiba Asia Pacific Pte., Ltd. • Toshiba (Australia) Pty., Ltd. • Toshiba (China) Co., Ltd. • Toshiba Electronic Components Taiwan Corporation • Toshiba Elevator (China) Co., Ltd. • Toshiba Elevator (Shenyang) Co., Ltd. • Toshiba Europe GmbH | <ul style="list-style-type: none"> • Toshiba Europe Ltd. • Toshiba Gulf FZE • Toshiba Hydro Power (Hangzhou) Co., Ltd. • Toshiba Industrial Products Asia Co., Ltd. • Toshiba Information Equipment (Philippines), Inc. • Toshiba International Corporation • Toshiba International Procurement Hong Kong, Ltd. • Toshiba JSW Power Systems Private Ltd. • Toshiba Lighting & Technology (Kunshan) Co., Ltd. | <ul style="list-style-type: none"> • Toshiba Semiconductor (Thailand) Co., Ltd. • Toshiba Tec France Imaging Systems S.A. • Toshiba Tec Singapore Pte., Ltd. • Toshiba Tec U.K. Imaging Systems Ltd. • Toshiba Transmission & Distribution Systems Asia Sdn. Bhd. • Toshiba Transmission & Distribution Systems (India) Private Ltd. • TPSC (India) Private Ltd. • TPSC (Thailand) Co., Ltd |

Affiliated Companies Accounted for by the Equity Method

(As of March 31, 2024)

- | Domestic | | |
|--|---|---|
| <ul style="list-style-type: none"> • EREX New Energy Saiki Co., Ltd. • Kioxia Holdings Corporation | <ul style="list-style-type: none"> • KK6 Safety Measures Joint Venture Corporation • SBS Toshiba Logistics Corporation | <ul style="list-style-type: none"> • TMEIC Corporation • WingArc1st Inc. |
| Overseas | | |
| <ul style="list-style-type: none"> • Dalian Toshiba Locomotive Electric Equipment Co.,Ltd. • GE Toshiba Turbine Components de Mexico S.R.L. de C.V. • MTJV (Thailand) Co., Ltd. | <ul style="list-style-type: none"> • Henan Pinggao Toshiba High-Voltage Switchgear Co., Ltd. • PG Toshiba (Henan) Switchgear Components Manufacturing Co., Ltd. • Schneider Toshiba Inverter SAS | <ul style="list-style-type: none"> • TDS Lithium-Ion Battery Gujarat Private Ltd. • TMEIC Corporation Americas • TMEIC Industrial Systems India Private Ltd. • Toshiba Mitsubishi-Electric Industrial Systems (China) Corporation |

Corporate History

July	1875	A shop-cum-factory (called Tanaka Seizo-sho from 1882; later Shibaura Engineering Works Co., Ltd.) opened in Tokyo.
Apr.	1890	Hakunetsu-sha & Co., Ltd. (from 1899 Tokyo Electric Company) founded.
Jan.	1896	Tokyo Hakunetsu Dentokyu Seizo Co., Ltd. established (Renamed Tokyo Electric Co, Ltd. in 1899)
June	1904	Shibaura Engineering Works Co., Ltd. established.
Sept.	1939	Shibaura Engineering Works Co., Ltd. merged with Tokyo Electric Company to become Tokyo Shibaura Electric Co., Ltd.
Oct.	1942	Absorbed Shibaura Mazda Industry Co., Ltd. and Nippon Medical Electric Co., Ltd., expanding home appliance line-up.
July	1943	Absorbed Tokyo Electric Co., Ltd. and Toyo Fire Brick Co., Ltd., expanding line-up of communications equipment.
Feb.	1950	Under the Law on Elimination of Excessive Concentration of Economic Power, a group of 14 companies, including Tokyo Electric Appliances Co., Ltd., now Toshiba TEC Corp., was separated from Tokyo Shibaura Electric Co., Ltd.
Apr.		Absorbed Toshiba Rolling Stock Co., Ltd., expanding rolling stock products.
Nov.	1955	Absorbed Dengyo-sha Prime Mover Works Ltd.
Nov.	1961	Absorbed Ishikawajima-Shibaura Turbine Co., Ltd., expanding line-up of turbines.
Apr.	1984	Japanese official trade name changed to "Toshiba Corporation."
Apr.	1999	Introduced in-house company system.
July	2001	Changed registered headquarters from Kawasaki City, Kanagawa, to Minato Ward, Tokyo.
June	2003	Adopted the Company with Committees (now, Company with a Nomination Committee, etc.) system.
Oct.		Transferred electric equipment for manufacturing plant business to TMA Electric Corp. (now Toshiba Mitsubishi-Electric Industrial Systems Corp.).
Oct.	2006	Acquired Westinghouse Group.
Oct.	2009	Acquired HDD business from Fujitsu Ltd.
Oct.	2010	Merged mobile phone business with that of Fujitsu Ltd. and transferred it to Fujitsu Toshiba Mobile Communications Ltd. (now FCNT LLC.).
July	2011	Acquired Landis+Gyr AG.
Mar.	2012	Transferred all shares of Toshiba Mobile Display Co., Ltd. to Japan Display Inc., a company established with co-funding by Innovation Network Corporation of Japan (now Japan Investment Corporation), Toshiba Corporation, Sony Corporation and Hitachi, Ltd.
Aug.		Toshiba TEC Corporation acquired the retail store solutions business of U.S.-based IBM (International Business Machines Corporation).
Mar.	2016	Sold off all shares of Toshiba Medical Systems Corporation (now Canon Medical Systems Corporation).
June		Sold off 80.1% shares of Toshiba Lifestyle Products & Services Corporation.
Mar.	2017	Westinghouse Group deconsolidated from Toshiba Group by Westinghouse Electric Company filing a voluntary petition for relief under Chapter 11.
Apr.		Split off and transferred the memory business to formerly Toshiba Memory Corporation by means of a company split.
July		Split off and transferred the social infrastructure business to Toshiba Electric Service Corp. (now Toshiba Infrastructure Systems & Solutions Corp.) by means of a company split. Split off and transferred the electronic devices business to Toshiba Electric Devices & Storage Corp. by means of a company split. Split off and transferred the ICT solutions business to Toshiba Solutions Corp. (now Toshiba Digital Solutions Corp.) by means of a company split.
July		Sold off 100% shares of Landis+Gyr Group.
Oct.		Split off and transferred the energy business to Toshiba Energy Systems & Solutions Corp. by means of a company split.
Feb.	2018	Transferred 95% shares of Toshiba Visual Solutions Corporation (now TVS REGZA Corporation) to China's Hisense Group.
June		Transferred all shares of formerly Toshiba Memory Corporation.
Oct.		Transferred 80.1% shares of Toshiba Client Solutions Co., Ltd. (now Dynabook Inc.) to Sharp Corporation. (Transferred 19.9% shares of Dynabook Inc. to Sharp Corporation in August 2020)
Aug.	2022	Transferred 55% of the outstanding shares of Toshiba Carrier Corporation to Global Comfort Solutions LLC.
Dec.	2023	Delisted from the Prime Market of the Tokyo Stock Exchange, Inc. and the Premier Market of the Nagoya Stock Exchange, Inc.

Corporate Data (As of March 31, 2024)

Toshiba Corporation

1-1, Shibaura 1-chome, Minato-ku, Tokyo, Japan (headquarters)

Founded	July 1875
Common Stock	¥201,449 million
Number of Employees	Approx. 105,000 (consolidated)
Fiscal Year	April 1 to March 31

- This report has not been audited by our independent auditor.
- Forward-looking statements
This report contains forward-looking statements concerning future plans, strategies and the performance of Toshiba Group. These forward-looking statements are not historical facts, rather they are based on management's assumptions and beliefs in light of the economic, financial and other data currently available. Since Toshiba Group promotes business in various market environments in many countries and regions, its activities are subject to a number of risks and uncertainties that, without limitation, relate to economic conditions, worldwide mega-competition in the electronics business, customer demand, foreign currency exchange rates, tax rules, regulations and other factors. Toshiba therefore wishes to caution readers that actual results might differ materially from its expectations.
- Regarding items reported in this report
Any corrections made to this report will be published on our website, as referenced above.
- Product names may be trademarks of the respective companies.
- This report has been prepared for the purposes of providing information and does not constitute an offer to sell or a solicitation of an offer to buy any security of Toshiba, its subsidiaries or any other company in Japan, the United States or any other jurisdiction.

Editorial Policy

This report aims to serve as an effective communication tool, providing stakeholders with a comprehensive understanding of the Toshiba Group. It integrates financial and non-financial information, presenting our strategies and results in a cohesive manner.

The report aligns with the integrated reporting frameworks recommended by the International Integrated Reporting Council and the *Guidance for Collaborative Value Creation* issued by Japan's Ministry of Economy, Trade and Industry.



Reporting period: April 1, 2023–March 31, 2024, with some information extending beyond April 2024.

Reporting scope: Toshiba Corporation and Toshiba Group.

For more detailed financial and non-financial information, please visit our website.

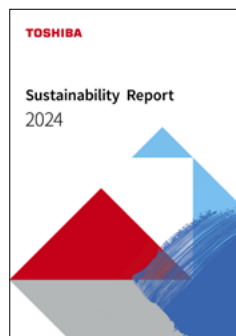
Reports

Financial and non-financial information



[Integrated Report](#)

Financial reports (main), non-financial outlines



[Sustainability Report](#)

Sustainability achievements and initiatives

Details of cyber security enhancement activities



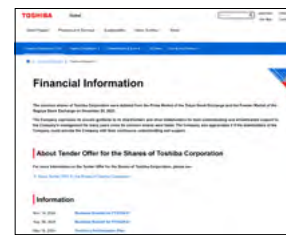
[Cyber Security Report](#)

Overview of cyber security activities

Website

Sources of timely information.

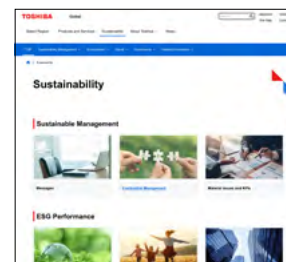
Financial information



[Financial Information Page](#)

Financial information

Non-financial information



[Sustainability website](#)

Sustainability information