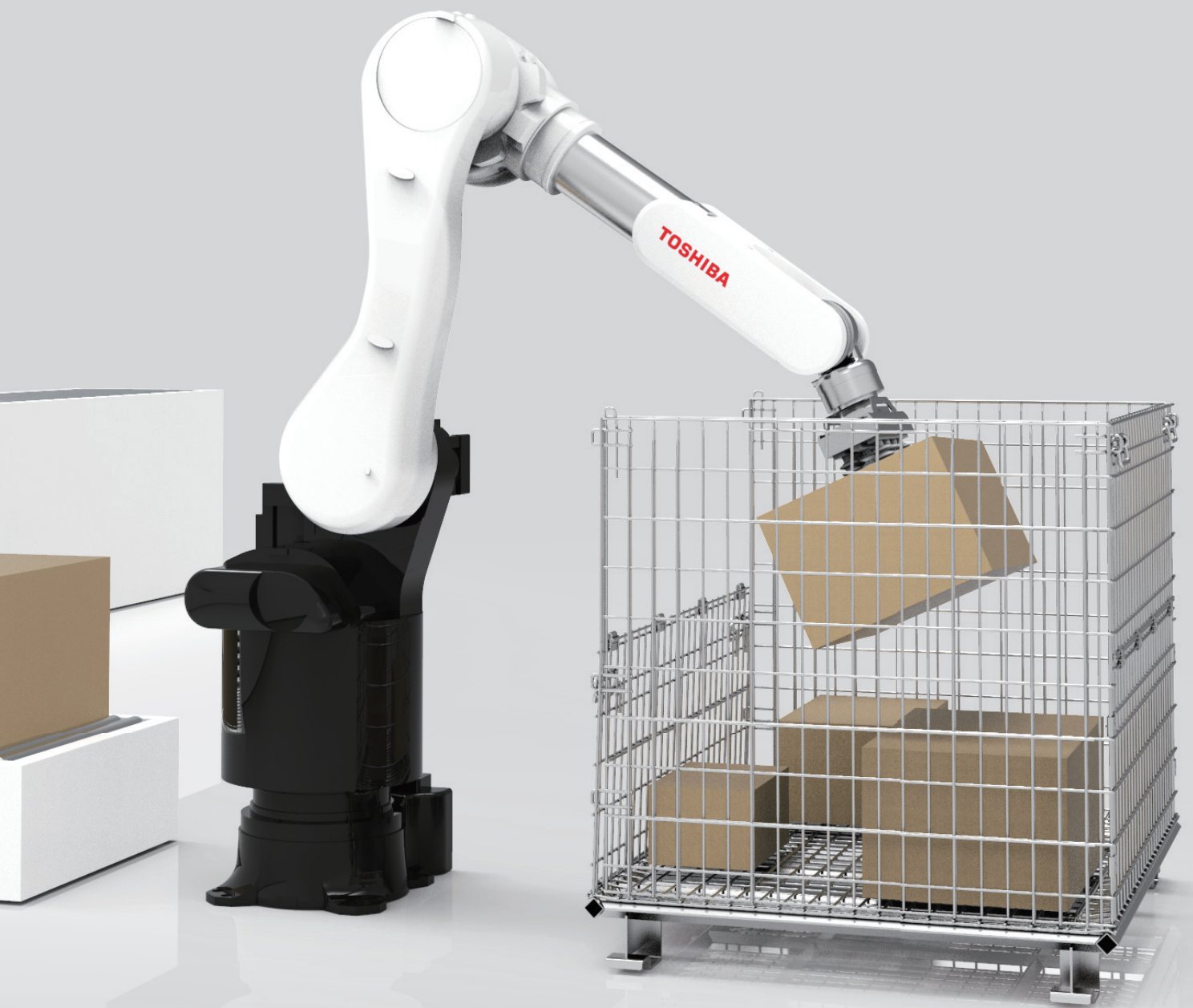


TOSHIBA

Unloading Robot



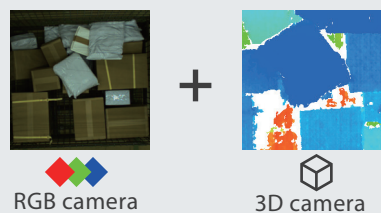
Info available
online



Smooth unloading of randomly stacked items

Dual cameras recognize items

An RGB and 3D camera recognize items with no need for prior teaching.



Recognize items by composite analysis

Secure picking of uneven items

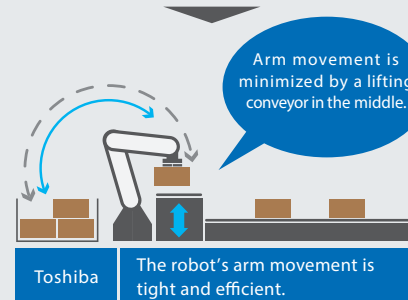
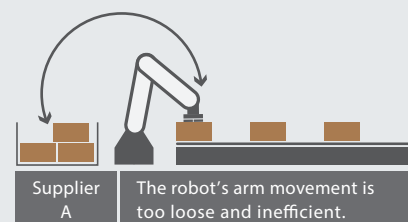
Items at unevenly packed are securely held by changing the angles of the gripper.



No problem picking randomly stacked items

High-speed processing at 600pph

On-site performance is maximized with peripheral equipment.



Operation is secure and stable

Advantage of the unloading robot



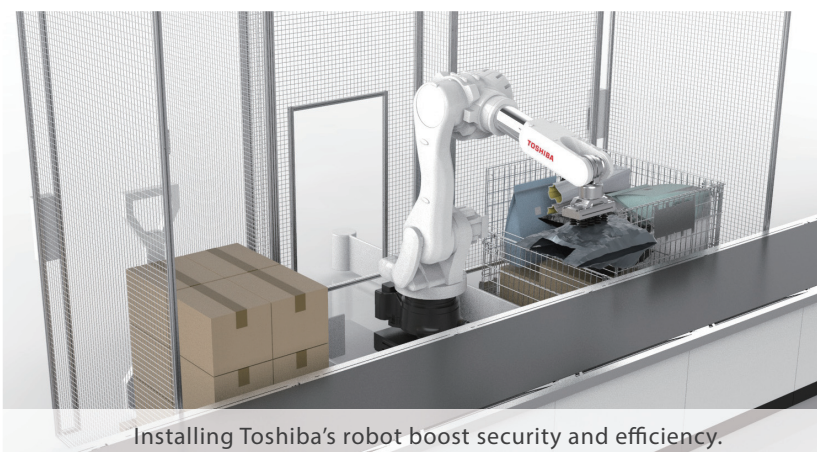
Safe, stable operation

Eliminate operator error and mistakes



Operator workloads are cut

Items as heavy as 20kg can be handled



Installing Toshiba's robot boost security and efficiency.

Specifications

Item	Description
Gripper type	Vacuum suction from above
Applicable containers	Pallet, roll container
Max. item size (mm)	600 × 650 × 325
Max. item weight (kg)	Less than 20
Dimensions (mm)	2200 × 3200 × 2700
Weight (kg)	Under 800 (excluding control panel and air compressor)
Throughput (pph)	600 (for items up to 8kg) * May vary with stacking.
Environmental conditions	Ambient temperature : 5 to 35°C, Relative humidity: 35 to 85%RH (Non condensing)

Toshiba Infrastructure Systems & Solutions Corporation

Security & Automation Systems Division International Sales & Marketing Department

<https://www.toshiba.co.jp/sis/en/scd/logistics/index.htm>
72-34, Horikawa-cho, Saiwai-ku Kawasaki 212-8585, Japan Tel: +81-44-331-1686

Info available online



●The information contained herein is as of February 1, 2020. ●The information contained herein is subject to change without notice. ●The information contained herein includes products and systems under planning or development. ●The information contained herein is presented only as a guide for the applications of our products. No responsibility is assumed by TOSHIBA for any infringements of patents or other rights of the third parties which may result from its use. No license is granted by implication or otherwise under any patent or patent rights of TOSHIBA or others. ●TOSHIBA products should not be embedded to the downstream products which are prohibited to be produced and sold, under any law and regulations. ●TOSHIBA does not take any responsibility for incidental damage (including loss of business profit, business interruption, loss of business information, and other pecuniary damage) arising out of the use or disability to use TOSHIBA products. ●The products described in this document may include products subject to the foreign exchange and foreign trade laws. ●The products described in this document may contain components made in the United States and subject to export control of the U.S. authorities. Diversion contrary to the U.S. law is prohibited.