

TOSHIBA

Company Brochure

Toshiba Infrastructure Systems & Solutions Corporation

Care for People and Contribute to Society

We realize safe, secure lives through our technologies and partnerships.

We are passionate and committed, determined to transform social and industrial infrastructure, to make it more productive and enriching.



Takayuki Konno,
President and CEO

Toshiba Infrastructure Systems &
Solutions Corporation

Toshiba Infrastructure Systems & Solutions Corporation was established on July 1, 2017 as a spin-off company of the social infrastructure domain of Toshiba Corporation, one of its focus areas.

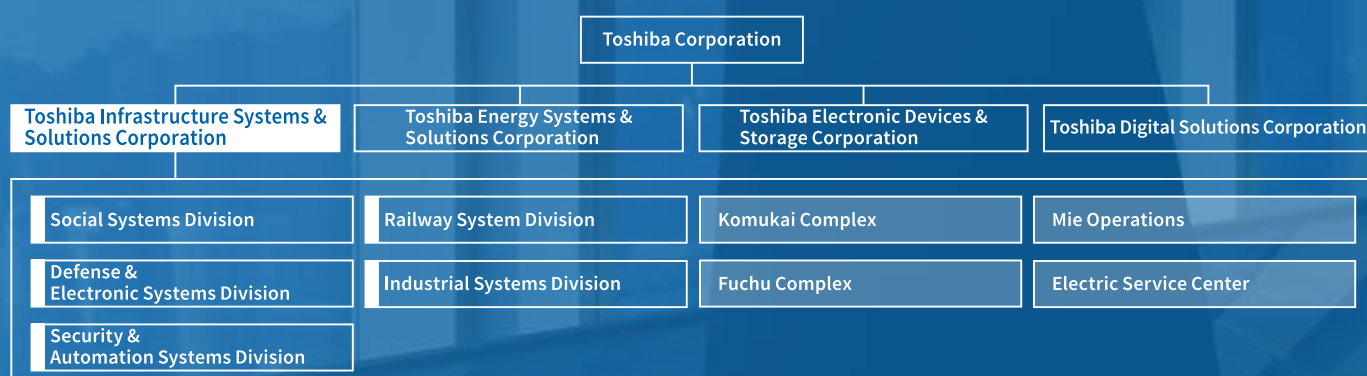
The mid-term Toshiba Next Plan announced in November 2018 states that Toshiba Group will be one of the world's leading cyber-physical systems (CPS) technology companies by combining its expertise in the physical realm with its strengths in cyber technology.

For many years, we have provided products, systems, and services to customers in the public sector that have the responsibility for maintaining the infrastructure of essential utilities. While leveraging our extensive expertise and experience in this field, we will also embrace IoT and artificial intelligence (AI) in years ahead in order to establish safer, more secure, and more convenient social infrastructure systems, thus contributing to our customers and society as well as the growth of Toshiba Group.

Our new management vision is "Care for People and Contribute to Society." as stated above. The world is in the midst of many changes, as typified by global warming, a declining birthrate, an aging population, aging urban infrastructure, and ever-evolving digitalization. Amidst these changes, we wish to support the safety and security of people and the well-being of society through our products and services.

We would appreciate your continued support of our new management vision.

April 1, 2019



Company Profile

Company Name	Toshiba Infrastructure Systems & Solutions Corporation	Net Sales	700 billion yen (Consolidated forecast for FY2018)
Headquarters Location	72-34, Horikawa-cho, Saiwai-ku, Kawasaki-shi, Kanagawa, Japan	Number of Employees	19,000 (Consolidated as of April 1, 2019)
Date of Succession	July 1, 2017 (Split off from Toshiba Corporation)	Business Description	Development, manufacturing, sales and services of social infrastructure-related products and systems
Capital Stock	10 billion yen		

Social Systems Division

By creating new value based on technology and trust in cooperation with our customers and partners, we contribute to urban and regional development and the realization of a sustainable society

Water & Environmental Systems

Smart water and environmental solutions

We address customer issues ranging from development, procurement and construction to operation and maintenance of water supply and wastewater infrastructure, and we offer a variety of solutions based on our comprehensive technologies. We provide highly reliable water and wastewater treatment systems and operation know-how in order to solve customer issues all over the world. In response to regional, cultural and environmental requirements, we contribute to the creation of environmentally advanced communities with sustainable water infrastructure.

Engineering, Procurement and Construction (EPC)

We offer effective solutions for secure, safe and stable water supply and wastewater operations worldwide by implementing engineering technologies based on abundant proven experience in delivering a wide-range of solutions.

Operation and Maintenance (O&M)

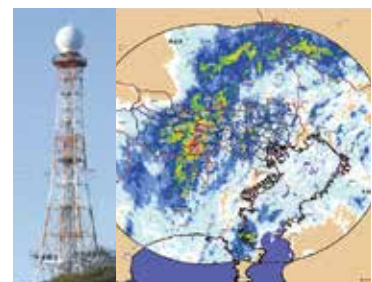
We combine development and construction with operation and maintenance services, establishing a value-chain that encompasses the entire lifecycle of the project.



Monitoring and control system for water supply and sewage treatment plant



Ozone Generator



Rainwater Drainage System



Energy & Highway

Creation of a safe and comfortable society

We provide stable power to buildings, airports and other public facilities; we create energy-conserving high-quality substation systems for the customer's infrastructure; and we develop advanced highway transportation systems which support the stable 24-hour operation of the systems required for highways. In response to the changing times, we work with our customers to create a safer and more comfortable society by leveraging technologies and services, including clean energy and automated driving.

Broadcasting & Network

Creation of a secure and affluent society to live in

We provide advanced disaster prevention communication systems that support the management of dams, rivers and roads in normal and disaster situations, and we also create broadcasting systems that support overall broadcaster operations, including everything from programming to broadcast delivery to the home. Leveraging technologies and services in response to frequent natural disasters and diverse broadcasting system needs, we create a more secure and affluent society for everyone to live in.



Substation system



Traffic control system



Disaster prevention telecommunication system



Digital master system

Main Products

- Monitoring and control system for water supply and sewage treatment plant
- Ozone Generator ● UV Disinfection System ● Sludge drying system
- Solid Fuel Production System from Sewage Sludge ● Rainwater Drainage System
- Substation system ● Airport lighting monitoring and control system
- Toll collection system ● Traffic control system ● Facility management system
- Disaster prevention telecommunication system ● River information system
- Radio-over-fiber equipment ● Digital master system ● Digital TV transmitter
- Flash memory video server

Main Domestic Manufacturing Bases

- Fuchu Complex ● Komukai Complex ● Mie Operations

Defense & Electronic Systems Division

Highly reliable products and services in radar and radio systems provide integrated infrastructure, support high levels of security and assure the defense of the public peace

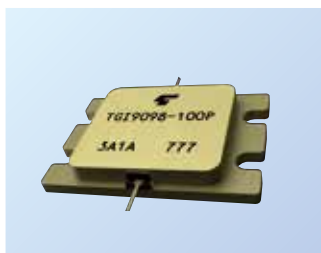
The Defense & Electronic Systems Division contributes to the realization of safety and secure life with providing various radar systems, navigation systems, radio monitoring systems and weather observation systems.

For the field of Air Traffic Control, we have been contributing to securing aviation safety through producing and supplying our advanced systems such as airport surveillance radar systems, en-route surveillance radar systems, navigation aids and more.

We also provide with advanced weather radar systems; it enables our customer to observe various useful data, such as rainfall data, potential lightning data and wind velocity data etc. Those data are utilized for weather forecast, potential lightning information and detecting downburst and so on by weather data processing systems.



Phased Array Weather Radar



Microwave semiconductor



Doppler VOR / DME

Main Products

- Radar systems ● Precision guidance systems
- Command control & intelligence systems ● Air traffic control and navigation aid systems
- Weather radar & disaster prevention systems ● Radio monitoring systems
- Radio application systems ● Microwave semiconductors

Main Domestic Manufacturing Bases

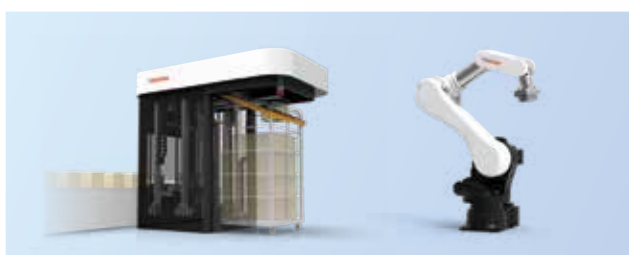
- Komukai Complex

Security & Automation Systems Division

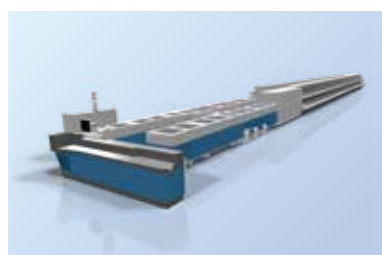
We contribute to the realization of a convenient and safe society by providing automation systems leveraging the world's leading technologies

The Security & Automation Systems Division offers a wide range of high-quality automation equipment and systems for various types of social infrastructure.

We provide robotics systems, logistics & postal automation systems, banknote automation systems, fare collection systems for railways, along with face recognition technologies and IoT security. Our smart card systems offer a very high level of security.



Robotics systems
(De-palletizer / Parcel robot)



Logistics & postal automation systems
(Letter sorting machine)



Banknote automation systems
(Banknote processing machine / Currency sorter)



Fare collection systems for railways
(Automatic ticket gate)

Main Products

- Robotics systems ● Logistics & postal automation systems
- Banknote automation systems ● Fare collection systems for railways
- Smart card systems ● Face recognition technologies
- IoT security

Main Domestic Manufacturing Bases

- Komukai Complex

Railway System Division

Railway transportation systems for a comfortable future

The Railway System Division, in its commitment to future progress, has consistently achieved technological breakthroughs on three systems that are shaping the future worldwide: rolling stock systems, power supply systems, and information systems. We have been working to better meet the requirements of railway transportation, such as environmental adaptability, safety, punctuality, comfort, and reliability.

(Source: East Japan Railway Co.)



Type E001 TRAIN SUITE SHIKI-SHIMA
(for East Japan Railway Co.)

(Source: East Japan Railway Co.)



Series E7 Shinkansen
(for East Japan Railway Co.)



N700A Shinkansen
(for Central Japan Railway Co.)



Traction energy storage system
with SCiB™ for DC railway
power supply systems
(for Okinawa Urban Monorail, Inc.)



Traffic & information control system
(for Tobu Railway Co., Ltd.)



Type HD300 Diesel Hybrid Shunting
Locomotive
(for Japan Freight Railway Co.)

Main Products

- Propulsion systems for AC / DC electrified lines
- Train information systems / Train safety systems ● Auxiliary power supply systems
- Air conditioning systems ● Locomotive ● Railway power supply systems
- Train traffic control systems ● Transportation planning systems

Main Domestic Manufacturing Bases

- Fuchu Complex ● Mie Operations ● Fuji Factory ● Hamakawasaki Operations

Industrial Systems Division

Toshiba's Industrial Systems will provide solutions best fit to your needs

The Industrial Systems Division provides key components, such as battery systems (rechargeable battery "SCiB™"), motors and inverters for industrial & automotive applications, as well as industrial computers, instrumentation & control equipment, switchgears, and transformers for industrial applications.

With accumulated know-how in manufacturing, energy and facility fields, we identify the most important action and provide our customers with best-fit solutions.



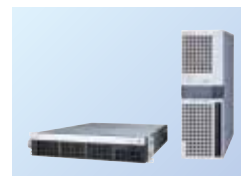
High-efficiency motor /
Automotive motor



Inverter



Lithium-ion battery system
(Rechargeable battery SCiB™)



Industrial computer



Density (consistency) meter



IoT controller



Switchgear



Distribution transformer

Main Products

- Industrial motors • Automotive motors • DC motors • Inverters • Drive equipment
- Lithium-ion battery systems (Rechargeable battery SCiB™)
- Industrial controllers • Instrumentation & control equipment
- Industrial computers • Metal industry measuring instruments
- IoT solutions (e.g. preventive maintenance, intrusion detection, FA automation, robot automation)
- Switchgears • Distribution transformer

Main Domestic Manufacturing Bases

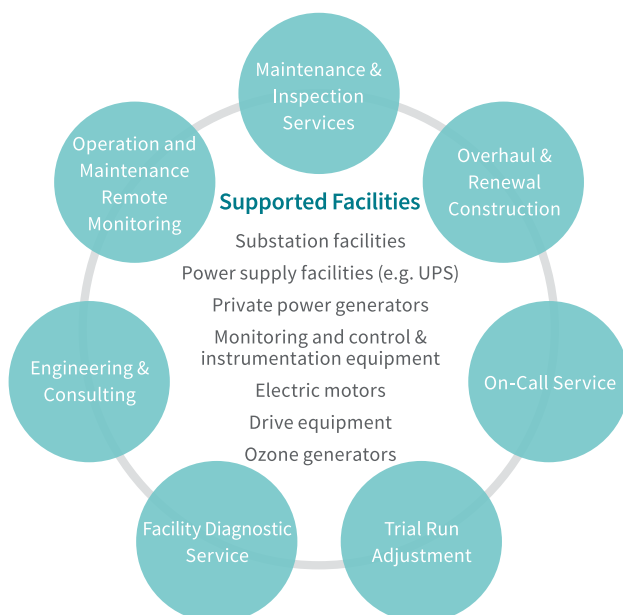
- Fuchu Complex • Mie Operations

Electric Service Center

We contribute to supporting the stable operation of the social infrastructure facilities through a variety of services, such as trial run adjustment, maintenance and inspection, preventive maintenance, repair, as well as operation and maintenance

For the stable operation of important social infrastructure facilities, including water supply and sewerage facilities, airport, road and railroad systems, along with substation systems and monitoring and control systems to support various buildings and factories, the Electric Service Center concentrates its advanced technology know-how and skills, which have been cultivated for a long time, and provides services, such as trial run adjustment, maintenance and inspection, preventive maintenance, repair, as well as operation and maintenance.

We contribute to the stable operation of social infrastructure facilities, buildings and factories through the 24-hour/365-day support system and nationwide service network.



24-Hour/365-Day Support

Our operators accept failure recovery requests and questions from customers and well-experienced experts handle such matters.

Sound Knowledge and Advanced Technology

Our field engineers' response capability gains trust from customers.

Nationwide Network Service

Our engineers are assigned nationwide for quick response.

Major Group Companies

1 Japan (Toshiba Group company names first and then other company names in alphabetical order)

Toshiba Automation Systems Service Co., Ltd.

Toshiba Communications Infrastructure Systems Corporation

Toshiba Design & Manufacturing Service Corporation

Toshiba E&I Control Systems, Inc.

Toshiba Electronic Engineering Corporation

Toshiba Electro-wave Components Co., Ltd.

Toshiba Electro-wave Products Co., Ltd.

Toshiba Environmental Solutions Corporation

Toshiba Industrial Products and Systems Corporation

Toshiba Infrastructure Equipment Technology Corporation

Toshiba IT & Control Systems Corporation

Toshiba Mie Maintenance Service Corporation

Toshiba Social Automation Systems Co., Ltd.

Toshiba Teli Corporation

Toshiba Transport Engineering Incorporated

Kariyushi Biomass Power Corporation

Kawamata Seiki Corporation

Tokyo Electronic Systems Corporation

Nishishiba Electric Co., Ltd.

Nishishiba Engineering Co., Ltd.

Nishinohon Kaden Recycle Corporation



2 Asia & Oceania

Toshiba Baiyun Vacuum Interrupters (Jinzhou) Co., Ltd.

Toshiba Industrial Products Asia Co., Ltd.

Toshiba Industrial Products & Systems Shanghai Corporation

Toshiba International Corporation Pty., Ltd.

Toshiba Water Solutions Private Limited

Kitashiba Electric (Shanghai) Co., Ltd.

Nishishiba Vietnam Co., Ltd.

PT. Envitech Perkasa

PZ Automotive Equipment (Hangzhou) Co., Ltd.

3 North America

Toshiba International Corporation

Toshiba Industrial Products Canada Ltd.

4 Europe

Toshiba Railway Europe GmbH

Toshiba Infrastructure Systems & Solutions Corporation

72-34 Horikawa-cho, Saiwai-ku, Kawasaki-shi, Kanagawa 212-8585, Japan TEL +81-44-331-0880

<https://www.toshiba.co.jp/cs/en/index.htm>

Divisions

Social Systems Division	Defense & Electronic Systems Division	Security & Automation Systems Division	Railway System Division	Industrial Systems Division
TEL +81-44-331-0689	TEL +81-44-331-1735	TEL +81-44-331-1075	TEL +81-44-331-1600	TEL +81-44-331-1571

Branch Offices

Hokkaido Branch Office TEL +81-11-624-1050	Tohoku Branch Office TEL +81-22-264-7611	Chubu Branch Office TEL +81-52-564-9190	Kansai Branch Office TEL +81-6-6130-2147
Hokuriku Branch Office TEL +81-76-445-2654	Chugoku Branch Office TEL +81-82-212-3633	Shikoku Branch Office TEL +81-87-825-2433	Kyushu Branch Office TEL +81-92-735-3018
Iwate Branch Office TEL +81-19-652-1048	North-Kanto Branch Office TEL +81-48-640-1123	Ibaraki Branch Office TEL +81-29-227-0571	East-Kanto Branch Office TEL +81-43-299-1000
Kanagawa Branch Office TEL +81-45-664-8411	Shizuoka Branch Office TEL +81-54-273-1048	Niigata Branch Office TEL +81-25-246-8200	Kanazawa Branch Office TEL +81-76-224-2811
Fukui Branch Office TEL +81-776-24-4739	Matsuyama Branch Office TEL +81-89-943-4589	Okinawa Branch Office TEL +81-98-862-3041	

Complexes / Operations

Fuchu Complex TEL +81-42-333-2010	Komukai Complex TEL +81-44-548-5003	Mie Operations TEL +81-59-376-6000	Electric Service Center TEL +81-3-5322-5051
--------------------------------------	--	---------------------------------------	--



Please read the instructions carefully before using products listed in this brochure.
The specifications in this brochure are subject to change without notice.
The specifications are as of June 2018.