

Social Infrastructure

► Medical Systems

Aquilion ONE™ / ViSION Edition Whole-Body X-Ray Computed Tomography Scanner

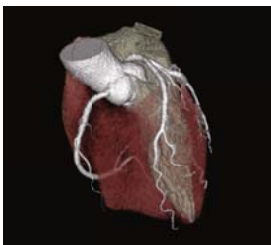


Aquilion ONE™ / ViSION Edition whole-body X-ray CT scanner

By incorporating new technologies in the field of area detector computed tomography (CT), which offers a scanning range of up to 160 mm in a single rotation, Toshiba Medical Systems Corporation has succeeded in developing the Aquilion ONE™ / ViSION Edition, a system that provides lower exposure doses and easier operability.

The main features of this system are as follows:

- **Fast cardiac scanning**
Fast scanning in which a rotation is performed in 0.275 s creates images with minimal blur and allows even patients with a high heart rate to be easily scanned in one heartbeat at a low dose.
- **Reduced dose**
The system incorporates an adaptive iterative dose reduction three-dimensional (AIDR 3D) image reconstruction technology. This technology makes it possible to reduce image noise by up to 50%, and a dose reduction of up to 75% can be expected based on dose conversion.
- **Improved operability**
A large gantry aperture measuring 78 cm in diameter, faster image reconstruction, and enhanced clinical applications improve the examination workflow.
- **Reduced power consumption**
Scanning in a single rotation and low-dose scanning with the AIDR 3D save power during scanning.



Cardiac image of Aquilion ONE™ / ViSION Edition using 0.275 s rotation scan (Courtesy of Fujita Health University Hospital, Japan)

Vantage Titan™ 1.5-Tesla Magnetic Resonance Imaging System

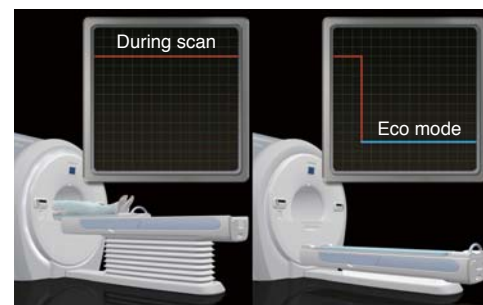


Vantage Titan™ 1.5-tesla MRI system

Toshiba Medical Systems Corporation has upgraded the Vantage Titan™ 1.5-tesla magnetic resonance imaging (MRI) system, incorporating the latest software platform and an “Eco mode” function.

The main features are as follows:

- **Simple and reliable examinations**
The latest platform, called M-Power, which has been designed with a focus on workflow, reduces the operational steps required during and after scanning and improves examination efficiency.
- **Eco mode**
This function extends the power-off status while maintaining stable system operation. Eco mode makes it possible to reduce power consumption by 15 500 kWh per year compared with our conventional systems. In addition, when the system is in Eco mode, it is ready for scanning in one second, allowing emergency examinations to be performed without delay.
- **Increased patient comfort**
The system is provided with a 71 cm-wide patient bore and Pianissimo™ silent scan technology. The value of these features has been demonstrated in previous Vantage Titan™ systems.



Standby power reduction achieved by Eco mode