

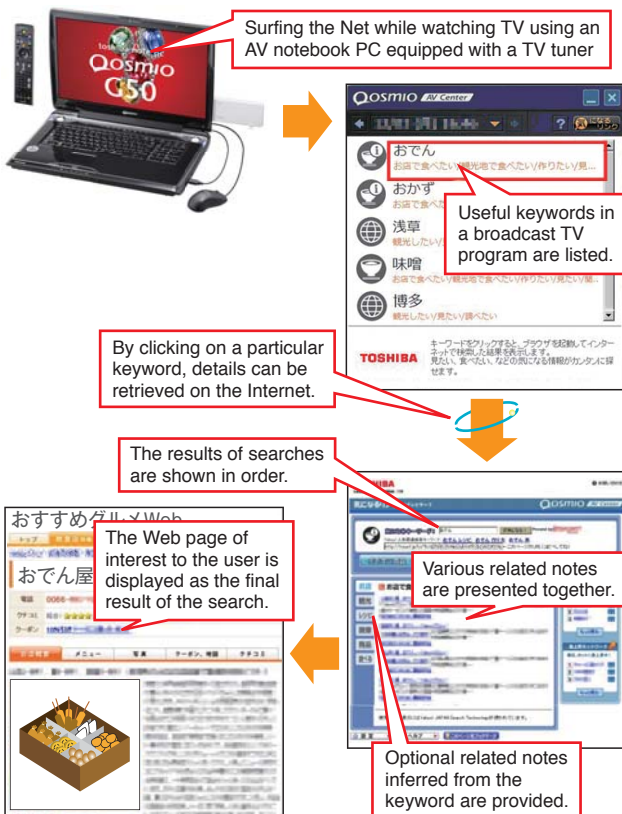
In the network services field, Toshiba provides advanced Internet services required for all types of businesses and lifestyles. Among these are a convenient application we have developed for audiovisual notebook PCs called KININARU-Link that permits users to easily retrieve information whenever they want it, and a gateway technology that allows mobile users to access corporate mission-critical systems.

KININARU-Link Internet-Based Search Application for Words of Interest in TV Programs

Toshiba has developed a function called KININARU-Link, which is a convenient application for the Qosmio™ series of audiovisual (AV) notebook PCs equipped with a TV tuner.

The software displays useful keywords in a broadcast TV program to the PC user, who may be working or running several types of software while surfing the Net, watching TV, listening to music, etc. When the user finds particular words in a TV program that are of interest and wishes to search the Internet using these words, they will most likely miss important points in the conversation on TV.

KININARU-Link provides these interesting words as hyperlinked keywords related to suitable search sites, therefore, all the user has to do is to click on the linked keywords to retrieve the details. The program also analyzes conversations on TV in real time, and presents various related notes such as well-known restaurants in the case of specific foods or historic spots in the case of city names.



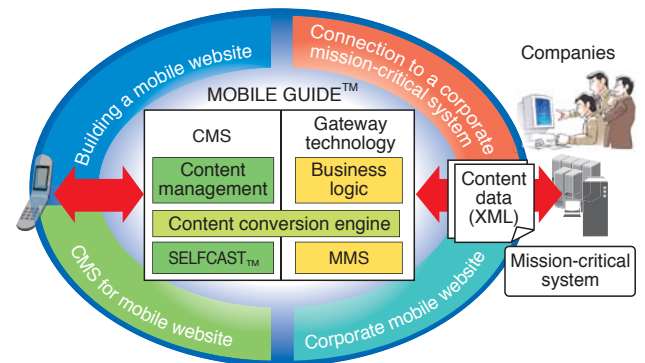
Overview of KININARU-Link service for Qosmio AV notebook PC

Platform for Collaboration between Corporate Information System and Mobile Website

Toshiba has developed the MOBILE GUIDE™ gateway technology for mobile website solutions as a platform for collaboration between a corporate mission-critical system and a mobile website. This technology makes it possible to build a mobile website for the business-to-consumer (B2C) market and a corporate mobile website safely and easily by combining the framework of the original development for building the mobile website and the SELFCAST™ content management system (CMS).

The newly developed technology has the advantage of allowing a mobile website to be quickly constructed by making the business logic controlling the business process into a template, embodying the unique specifications of customers as plug-in software, and enabling these to be treated transparently by SELFCAST™. This technology has already been introduced into various companies in such fields as electric power, securities, and life insurance, which require highly reliable website operations.

In the future, we will introduce mobile Flash and other types of rich content with this technology as the core.



MMS: Mobile Multi-Protocol Service
XML: Extensible Markup Language

Conceptual diagram of MOBILE GUIDE™ gateway technology