

**TOSHIBA**

# Company Brochure

Toshiba Infrastructure Systems & Solutions Corporation

# Care for People and Contribute to Society

We realize safe, secure lives through our technologies and partnerships.

We are passionate and committed, determined to transform social and industrial infrastructure, to make it more productive and enriching.

Toshiba Infrastructure Systems & Solutions Corporation was established on July 1, 2017 as a spin-off of the social infrastructure domain of Toshiba Corporation, one of its focus areas.

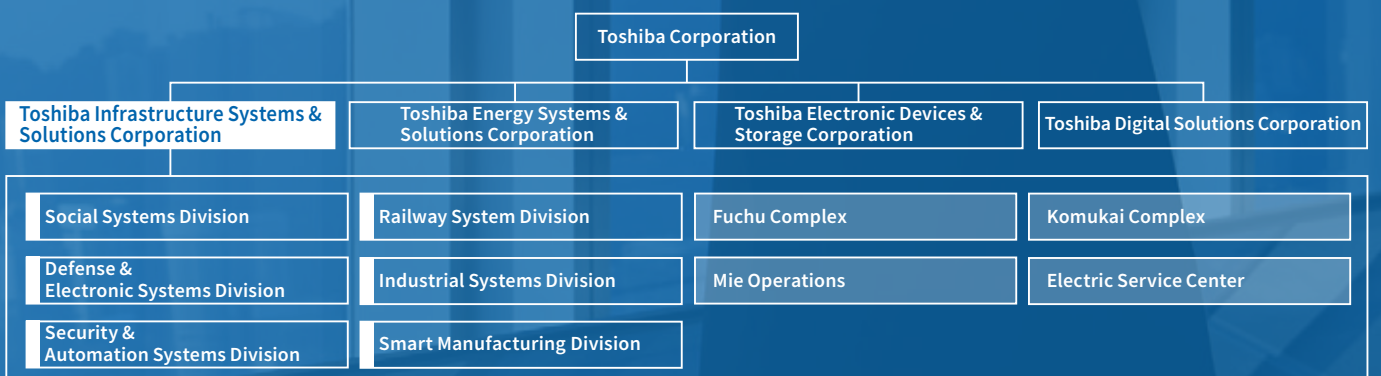
The Toshiba Group management policy announced in June 2022 states “Toshiba Group will contribute to the achievement of carbon neutrality and a circular economy through digitization.”

We have provided products, systems, and services over many years to customers in the public sector responsible for maintaining the infrastructure of essential utilities. While leveraging our extensive expertise and experience in this field, we also utilize digital and data technologies to contribute to our customers and society through the establishment of infrastructures as well as the growth of Toshiba Group.

Our management vision is “Care for People and Contribute to Society. We realize safe, secure lives through our technologies and partnerships. We are passionate and committed, determined to transform social and industrial infrastructure, to make it more productive and enriching,” as stated above. The world is facing many changes, including global warming, a declining birthrate, an aging population, aging urban infrastructure, and ever-evolving digitalization. Amidst these changes, we strive to ensure the safety and security of society and the well-being of the public through our products and services.

We look forward to your continuing support.

Toshiba Infrastructure Systems & Solutions Corporation



## Company Profile

Company Name	Toshiba Infrastructure Systems & Solutions Corporation	Net Sales	686.3 billion yen (Consolidated sales for FY2022)
Headquarters Location	72-34, Horikawa-cho, Saiwai-ku, Kawasaki-shi, Kanagawa, Japan	Number of Employees	Approx. 19,000 (as of March 31, 2023)
Date of Succession	July 1, 2017 (Split off from Toshiba Corporation)	Business Description	Development, manufacturing, sales and services of social infrastructure-related products and systems
Capital Stock	10 billion yen		



# Social Systems Division

**We create new value through the provision of products, systems, and services that support urban and regional infrastructure as well as through co-creation with customers and business partners based on technology and trusting relationships as we contribute to realizing a bright future and sustainable society.**

---

## Water & Environmental Systems

### Smart water and environmental solutions

We strive to address a variety of water and environmental issues by offering effective solutions that include the design, procurement, construction, operation and maintenance of water-supply and sewage infrastructure using our comprehensive technical capabilities. To ensure that our solutions are both global and tailored to diverse regions, cultures, and environments, we combine a wide range of technologies in ways that contribute to the establishment of a sustainable water circulation system while creating environmentally advanced communities.

### Engineering, Procurement and Construction (EPC)

We offer effective solutions for secure, safe and stable water supply and wastewater operations worldwide by implementing engineering technologies based on abundant proven experience in delivering a wide-range of solutions.

### Operation and Maintenance (O&M)

We combine development and construction with operation and maintenance services, establishing a value-chain that encompasses the entire lifecycle of the project.

### Public-Private Partnerships

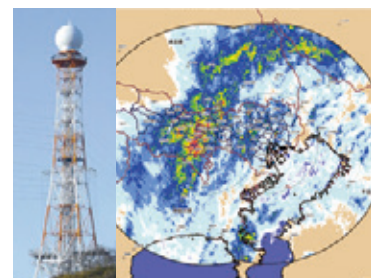
Using technical know-how accumulated through our experience in the construction and subcontracting of inspection of water-supply and sewage facilities, we are actively engaged in public-private partnerships such as subcontracting water supply to third parties, DB, DBO, concessions, and more.



Monitoring and control system for water supply and sewage treatment plant



Ozone Generator



Rainwater Drainage System



## Energy & Highway Systems

### Creation of a safe and comfortable society

We provide stable power to buildings, airports and other public facilities; we create energy-conserving high-quality substation systems for the customer's infrastructure; and we develop advanced highway transportation systems which support the stable 24-hour operation of the systems required for highways. In response to the changing times, we work with our customers to create a safer and more comfortable society by leveraging technologies and services, including clean energy and automated driving.

## Telecommunication & Broadcasting Systems

### Creation of a secure and affluent society to live in

We provide advanced disaster management solutions & telecommunications systems that support the management of dams, rivers and roads in normal and disaster situations, systems for mobile base stations that create flexible mobile communication environments, and broadcasting systems that support overall broadcaster operations, from programming to broadcast delivery to the home. Leveraging technologies and services in response to frequent natural disasters and diverse broadcasting system needs due to changes in audio-visual environment, we create a more secure and affluent society for everyone.



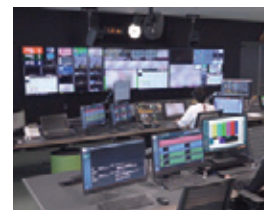
Substation system



Traffic control system



Disaster management solutions & telecommunications systems



Broadcasting systems

### Main Products

- Monitoring and control system for water supply and sewage treatment plant
- Ozone Generator ● UV Disinfection System ● Sludge drying system
- Solid Fuel Production System from Sewage Sludge ● Rainwater Drainage System
- Substation system ● Airport lighting monitoring and control system
- Toll collection system ● Traffic control system ● Facility management system
- Disaster management solutions & telecommunications systems
- River information system ● Optical relay unit for mobile network
- Broadcasting systems ● Digital TV transmitter

### Main Domestic Manufacturing Bases

- Fuchu Complex ● Komukai Complex ● Mie Operations

# Defense & Electronic Systems Division

## Highly reliable products and services in radar and radio systems provide integrated infrastructure, support high levels of security and assure the defense of the public peace

The Defense & Electronic Systems Division contributes to the realization of safety and secure life by providing various radar systems, air navigation systems, air defense systems and weather disaster management systems etc.

For the field of Air Traffic Control, we have been contributing to securing aviation safety through producing and supplying our advanced systems such as airport surveillance radar systems, en-route surveillance radar systems, navigation aids and more.

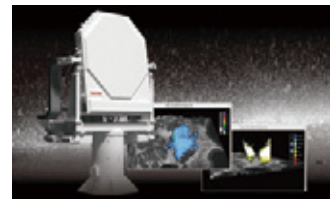
Also, we provide advanced weather radar systems. For the field of weather and disaster management, by data processing the observation data from the advanced weather radar, we could detect weather data such as rainfall, lighting and wind velocity. These data are utilized for weather forecast or could be contribute for preventing lighting accident or aviation incident at aircraft landing or takeoff.



Air defense systems



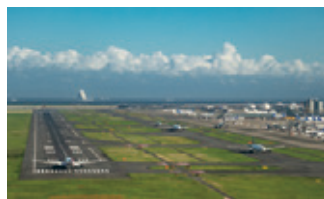
Airborne radar systems



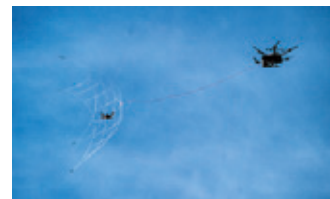
Weather radar & disaster management systems



Navigation aids



Air traffic control systems



Counter drone solutions

### Main Products

- Radar systems ● Air defense systems
- Command control & intelligence systems ● Air traffic control systems and navigation aids
- Weather radar & disaster management systems ● Radio monitoring systems
- Radio application systems ● Microwave semiconductors

### Main Domestic Manufacturing Bases

- Komukai Complex

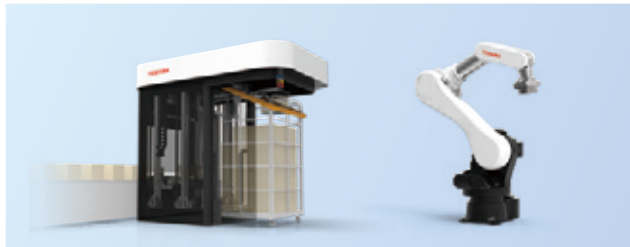


# Security & Automation Systems Division

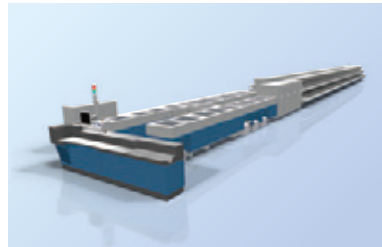
## We contribute to the realization of a convenient and safe society by providing automation systems leveraging the world's leading technologies

The Security & Automation Systems Division offers a wide range of high-quality automation equipment and systems for various types of social infrastructure.

We provide robotics systems, logistics & postal automation systems, banknote automation systems, fare collection systems for railways, along with face recognition technologies and IoT security. Our card security systems contribute to security by authenticating people and things.



Robotics systems  
(De-palletizer / Unloading robot)



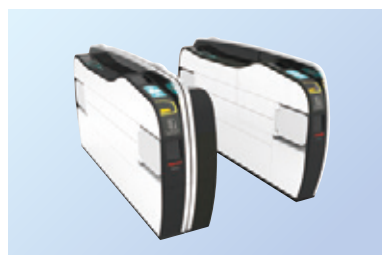
Logistics & postal automation systems  
(Letter sorting machine)



Banknote automation systems  
(Banknote processing machine)



IoT security solution



Fare collection systems for railways  
(Automatic gate)

### Main Products

- Robotics systems ● Logistics & postal automation systems
- Banknote automation systems ● IoT security solution
- Fare collection systems for railways ● Card security systems
- Face recognition technologies

### Main Domestic Manufacturing Bases

- Komukai Complex

# Railway System Division

## Railway transportation systems for a comfortable future

The Railway System Division, in its commitment to future progress, has consistently achieved technological breakthroughs on three systems that are shaping the future worldwide: rolling stock systems, power supply systems, and information systems. We have been working to better meet the requirements of railway transportation, such as environmental adaptability, safety, punctuality, comfort, and reliability.

(Source: East Japan Railway Co.)



Type E001 TRAIN SUITE SHIKI-SHIMA  
(for East Japan Railway Co.)

(Source: East Japan Railway Co.)



Series E7 Shinkansen  
(for East Japan Railway Co.)

(Source: Central Japan Railway Co.)



N700S Shinkansen  
(for Central Japan Railway Co.)



Traction energy storage system with SCiB™ for DC railway power supply systems  
(for Okinawa Urban Monorail, Inc.)



Traffic & information control system  
(for Tobu Railway Co., Ltd.)



Type HD300 Diesel Hybrid Shunting Locomotive  
(for Japan Freight Railway Co.)

### Main Products

- Propulsion systems for AC / DC electrified lines
- Train information systems / Train safety systems • Auxiliary power supply systems
- Air conditioning systems • Locomotive • Railway power supply systems
- Train traffic control systems • Transportation planning systems

### Main Domestic Manufacturing Bases

- Fuchu Complex • Mie Operations • Fuji Factory • Hamakawasaki Operations

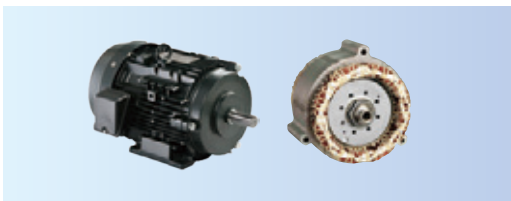


# Industrial Systems Division

## Toshiba's Industrial Systems will provide solutions best fit to your needs

The Industrial Systems Division provides key components, such as battery systems (rechargeable battery "SCiB™"), motors and inverters for industrial & automotive applications, as well as switchgears and transformers for industrial applications.

With accumulated know-how in manufacturing, energy and facility fields, we identify the most important action and provide our customers with best-fit solutions.



High-efficiency motor / Automotive motor



Inverter



Lithium-ion battery system  
(Rechargeable battery SCiB™)



Switchgear



transformer

### Main Products

- Industrial motors • Automotive motors • DC motors
- Low Voltage Variable Speed Drives • Drive equipment
- Lithium-ion battery systems (Rechargeable battery SCiB™)
- Switchgears • Distribution transformer

### Main Domestic Manufacturing Bases

- Fuchu Complex • Mie Operations

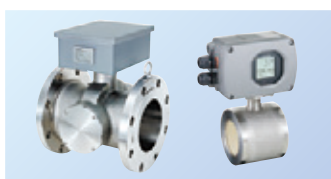
# Smart Manufacturing Division

**To realize your DX (Digital Transformation),  
Toshiba will provide best-fit solutions by combining  
the technologies based on our many years of  
manufacturing experience in the industrial domain with  
cutting-edge digital technologies including cloud and AI/IoT.**

The Smart Manufacturing Division provides one-stop OT/IT solutions with measurement and control components (industrial computers, controllers, electromagnetic flowmeters/microwave density meters, metal industry measuring instruments, wristband sensors, etc.) , digital solutions (Meister series), cyber security, and etc.

Furthermore, commitment to carbon neutrality and circular economy is one of the social issues. More than ever, we need to shuffle between the OT field and IT field and work through optimization of facility operation, utilization of renewable energy, and reuse of resources.

With our accumulated experience and diverse technical capabilities, we will work closely with our customers and cooperate in DX challenges.



Electromagnetic Flowmeter • Density(Consistency) Meter



Industrial Controller



Metal industry measuring instruments



Industrial computer

## Main Products

- Industrial controllers • Electromagnetic Flowmeter • Density(Consistency) Meter
- Industrial computers • Metal industry measuring instruments

## Main Domestic Manufacturing Bases

- Fuchu Complex

# Electric Service Center

**We contribute to supporting the stable operation of the social infrastructure facilities through a variety of services, such as trial run adjustment, maintenance and inspection, preventive maintenance, repair, as well as operation and maintenance**

For the stable operation of important social infrastructure facilities, including water supply and sewerage facilities, airport, road and railroad systems, along with substation systems and monitoring and control systems to support various buildings and factories, the Electric Service Center concentrates its advanced technology know-how and skills, which have been cultivated for a long time, and provides services, such as trial run adjustment, maintenance and inspection, preventive maintenance, repair, as well as operation and maintenance.

We contribute to the stable operation of social infrastructure facilities, buildings and factories through the 24-hour/365-day support system and nationwide service network.



## 24-Hour/365-Day Support

Our operators accept failure recovery requests and questions from customers and well-experienced experts handle such matters.

## Sound Knowledge and Advanced Technology

Our field engineers' response capability gains trust from customers.

## Nationwide Network Service

Our engineers are assigned nationwide for quick response.



# Major Group Companies

## 1 Japan (Toshiba Group company names first and then other company names in alphabetical order)

Toshiba Automation Systems Service Co., Ltd.	Toshiba IT & Control Systems Corporation
Toshiba Design & Manufacturing Service Corporation	Toshiba Teli Corporation
Toshiba E&I Control Systems, Inc.	Toshiba Transport Engineering Incorporated
Toshiba Electro-wave Products Co., Ltd.	Kawamata Seiki Corporation
Toshiba Electronic Technologies Corporation	Nishishiba Electric Co., Ltd.
Toshiba Environmental Solutions Corporation	Nishinihon Kaden Recycle Corporation
Toshiba Industrial Products and Systems Corporation	

## 2 Asia & Oceania

Toshiba Baiyun Vacuum Interrupters (Jinzhou) Co., Ltd.  
 Toshiba Industrial Products Asia Co., Ltd.  
 Toshiba Industrial Products & Systems Shanghai Corporation  
 Toshiba International Corporation Pty., Ltd.  
 Toshiba Water Solutions Private Limited  
 Nishishiba Vietnam Co., Ltd.

## 3 North America

Toshiba International Corporation  
 Toshiba Industrial Products Canada Ltd.

## 4 Europe

Toshiba Railway Europe GmbH



# Toshiba Infrastructure Systems & Solutions Corporation

72-34 Horikawa-cho, Saiwai-ku, Kawasaki-shi, Kanagawa 212-8585, Japan TEL +81-44-576-6700

<https://www.global.toshiba/ww/company/infrastructure.html>

### Divisions

Social Systems Division TEL +81-44-576-6624	Defense & Electronic Systems Division TEL +81-44-576-6682	Security & Automation Systems Division TEL +81-44-576-6712
Railway Systems Division TEL +81-44-576-6737	Industrial Systems Division TEL +81-44-576-6747	Smart Manufacturing Division TEL +81-44-576-6750

### Branch Offices

Hokkaido Branch Office TEL +81-11-624-1050	Tohoku Branch Office TEL +81-22-264-7611	Chubu Branch Office TEL +81-52-564-9190	Kansai Branch Office TEL +81-6-6130-2147
Hokuriku Branch Office TEL +81-76-445-2654	Chugoku Branch Office TEL +81-82-212-3633	Shikoku Branch Office TEL +81-87-825-2433	Kyushu Branch Office TEL +81-92-735-3018
Iwate Branch Office TEL +81-19-652-1048	North-Kanto Branch Office TEL +81-48-640-1123	Ibaraki Branch Office TEL +81-29-227-0571	East-Kanto Branch Office TEL +81-43-299-1000
Kanagawa Branch Office TEL +81-45-664-8411	Shizuoka Branch Office TEL +81-54-273-1048	Niigata Branch Office TEL +81-25-246-8200	Kanazawa Branch Office TEL +81-76-224-2811
Fukui Branch Office TEL +81-776-24-4739	Matsuyama Branch Office TEL +81-89-943-4589	Okinawa Branch Office TEL +81-98-862-3041	

### Complexes / Operations

Fuchu Complex TEL +81-42-333-2010	Komukai Complex TEL +81-44-548-5003	Mie Operations TEL +81-59-376-6000	Electric Service Center TEL +81-3-5322-5051
--------------------------------------	--	---------------------------------------	--



Please read the instructions carefully before using products listed in this brochure.  
 The specifications in this brochure are subject to change without notice.  
 The specifications are as of March 2024.